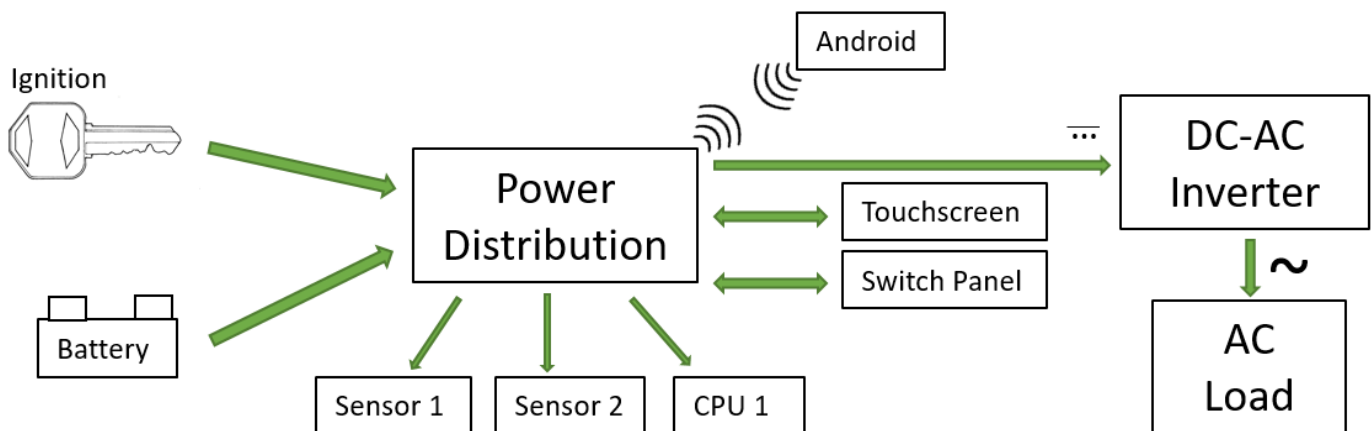


# Vehicle Power Distribution



A flexible, feature-rich power distribution system for development and test vehicles.



- Interface Layers

- CAN
- Ethernet
- Bluetooth

- Interface Hardware

- Touchscreen Display (CAN)
- Switch Panel (CAN)
- Android App (Bluetooth)

- Interface Software

- LCM (Ethernet)
- ROS (Ethernet, CAN)
- dSPACE (CAN)

- Features

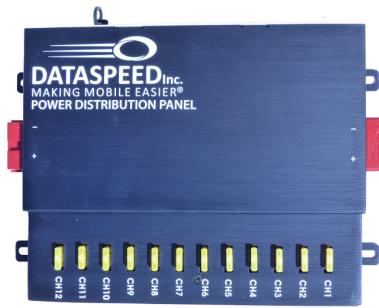
- 12 fused relay channels
- 20A continuous per channel
- 9V-18V input range
- Ignition signal for automatic startup and shutdown
- Programmable startup and shutdown scripts
- Current feedback and fault detection
- AC Power Inverter for 120V or 240V loads
- External fan control
- Combine two units for a total of 24 channels



Contact us for more information!

[info@dataspeedinc.com](mailto:info@dataspeedinc.com)

248-879-0528

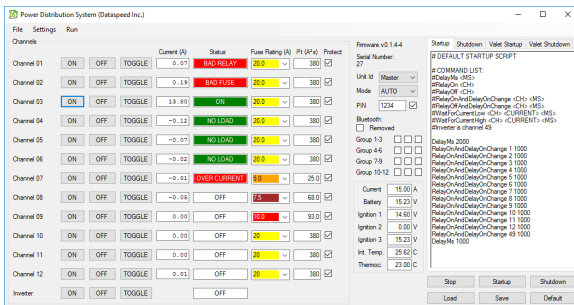


## Power Distribution Panel

- User-serviceable fuses
- Screw terminal channel power connectors
- Status lights for each channel

## Touch Screen Interface

- Individual channel control and status
- Current monitoring
- Script execution



## Configuration GUI

- Customize channel names
- Set individual channel current limits
- Write startup and shutdown scripts

## Switch Panel Interface

- Individual channel control and status
- Script execution
- Hidden in the center console of Ford vehicles



## DC-AC Power Inverter

- AC 120V or 240V option
- 600W continuous
- Control and status



Contact us for more information!  
info@dataspeedinc.com  
248-879-0528